

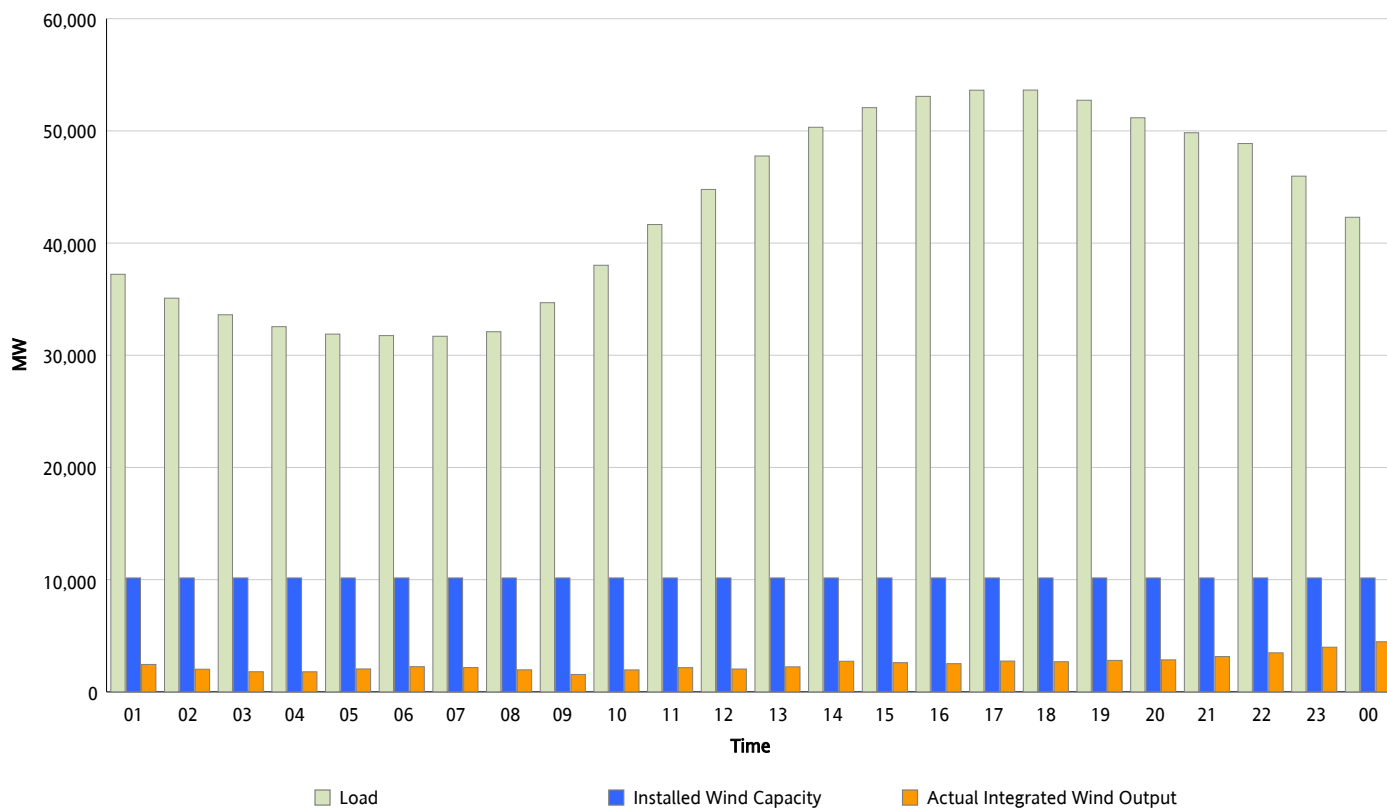


ERCOT Grid Operations

Wind Integration Report : 07/21/2013

| | |
|----------------------|-----------|
| Peak Load | 53,641 MW |
| Load Peak Hour (HE) | 18 |
| Wind Over Peak | 2,686 MW |
| Wind Record 05/02/13 | 9,674 MW |
| Max Wind Value* | 4,665 MW |
| Wind Peak Time | 23:51 |
| Wind Integration % | 11.35 % |

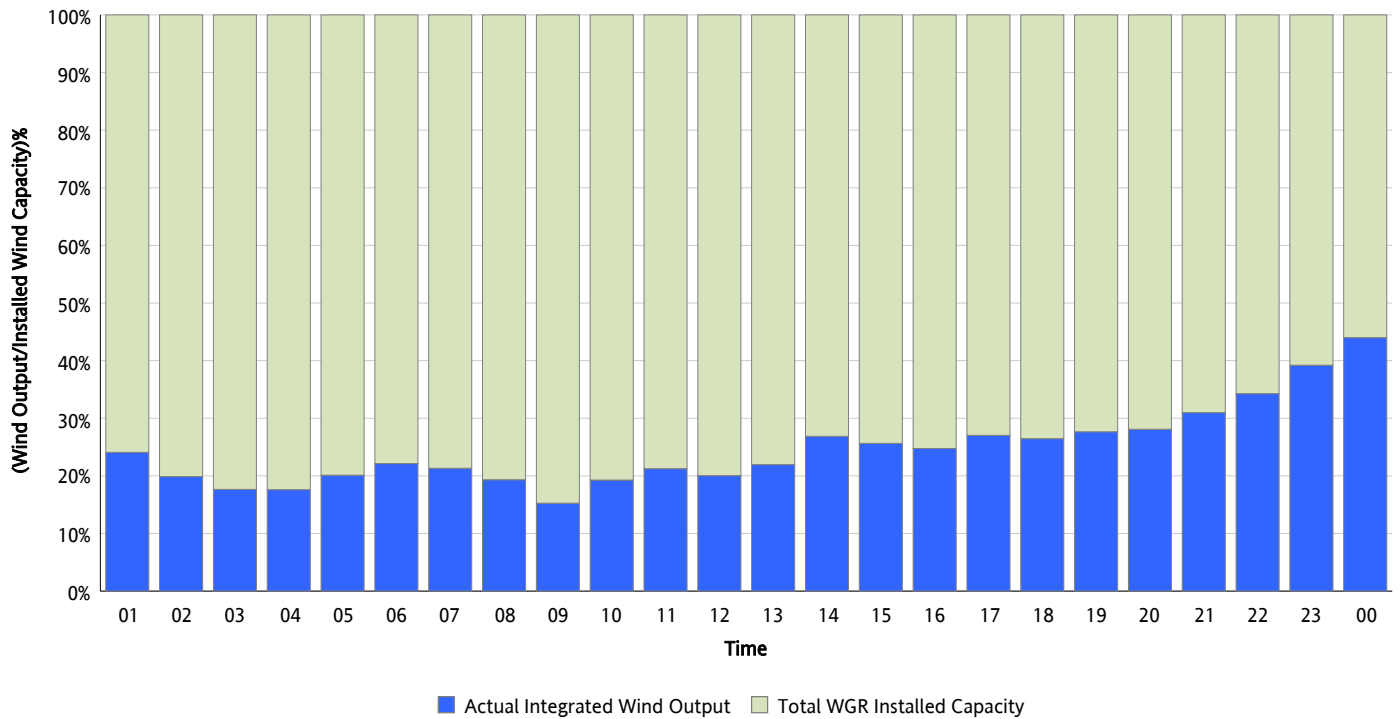
Hourly Average Actual Load vs. Actual Wind Output
07/21/2013



** Wind Record and Wind Max represent instantaneous values and the rest of the values are integrated over the hour*

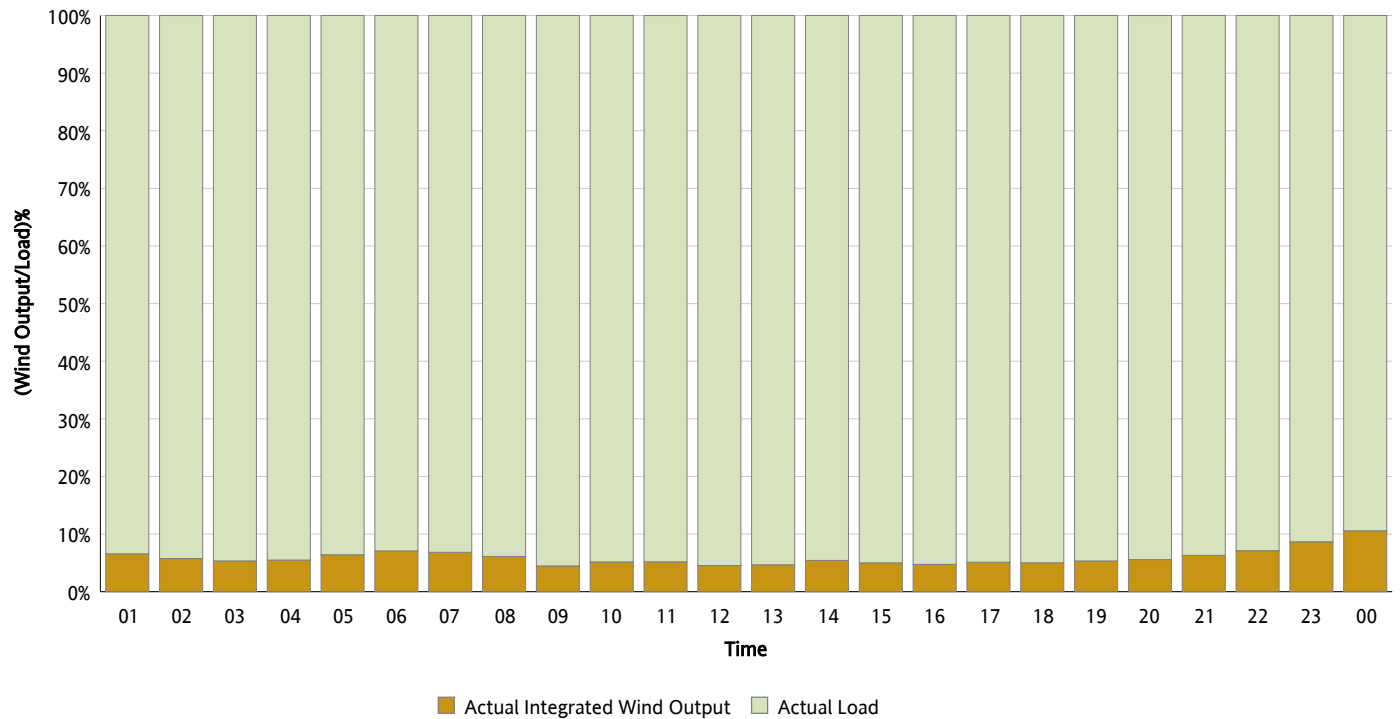
Actual Wind Output as a Percentage of the Total Installed Wind Capacity

07/21/2013



Actual Wind Output as a Percentage of the ERCOT Load

07/21/2013



ERCOT Load vs. Actual Wind Output

07/14/2013 - 07/21/2013

